

Natural Ellipse

Architects: Masaki Endoh + Ikeda Masahiro
Endoh Design House & MIAS

Location: Shibuya shopping district
Tokyo, Japan

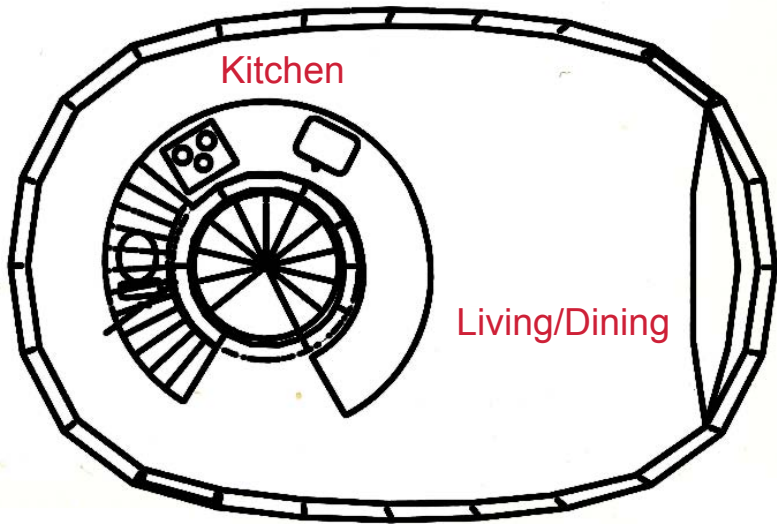
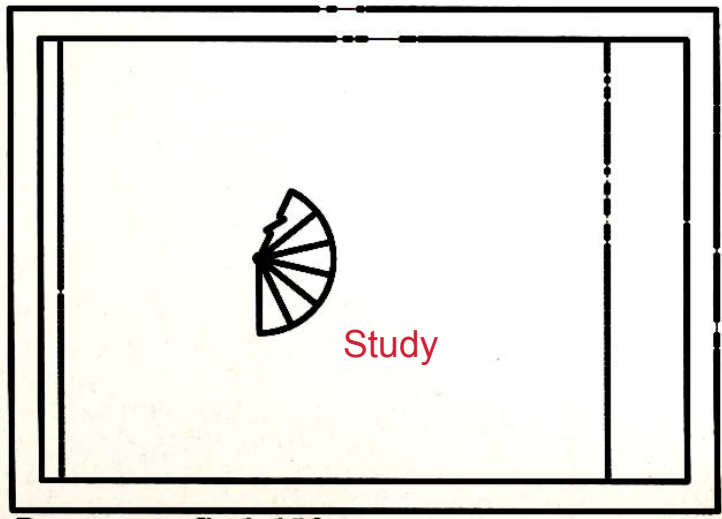
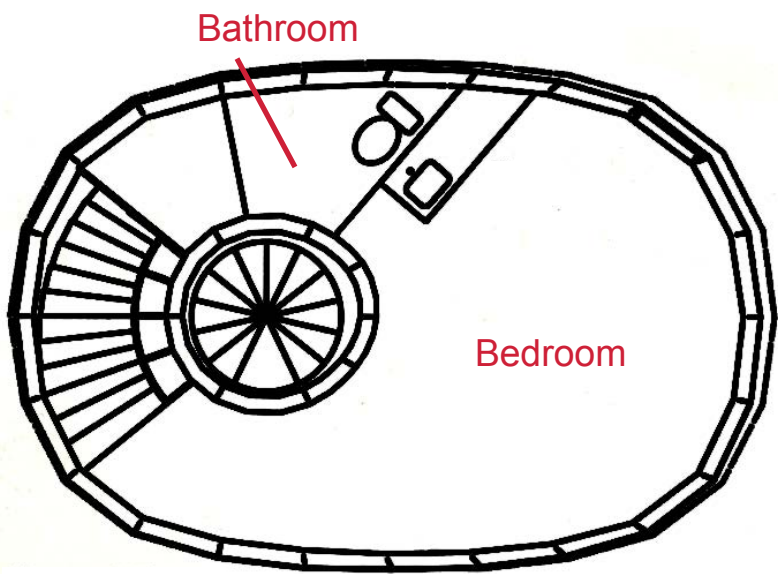
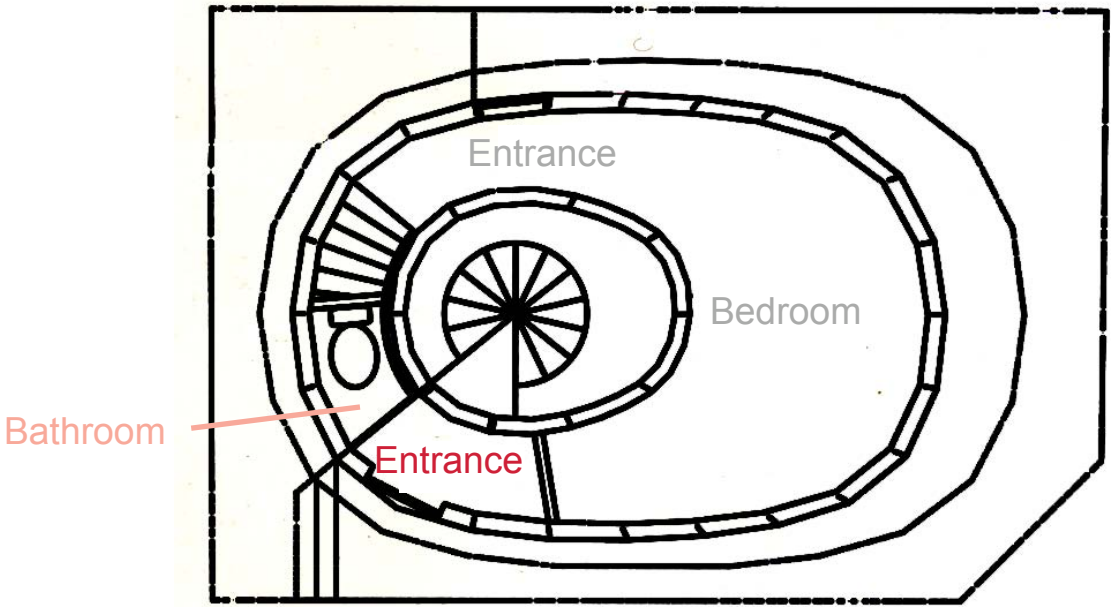
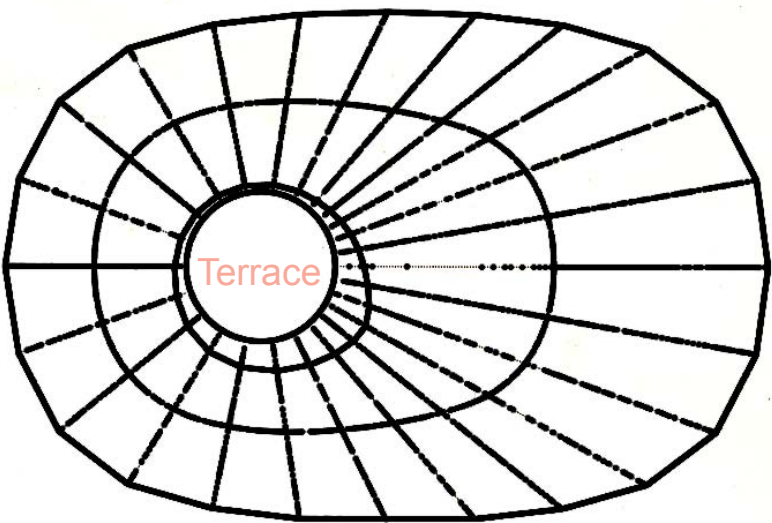
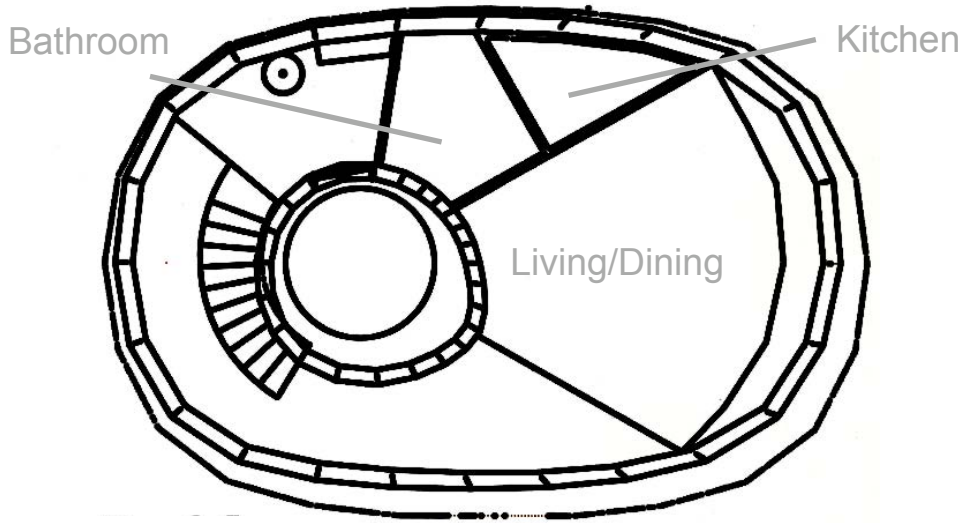
Designed: 1999-2000

Built: 2001-2002

Details: Steel structure + FRP
Building area: ~ 335.8 sq.ft.



Floor Plans

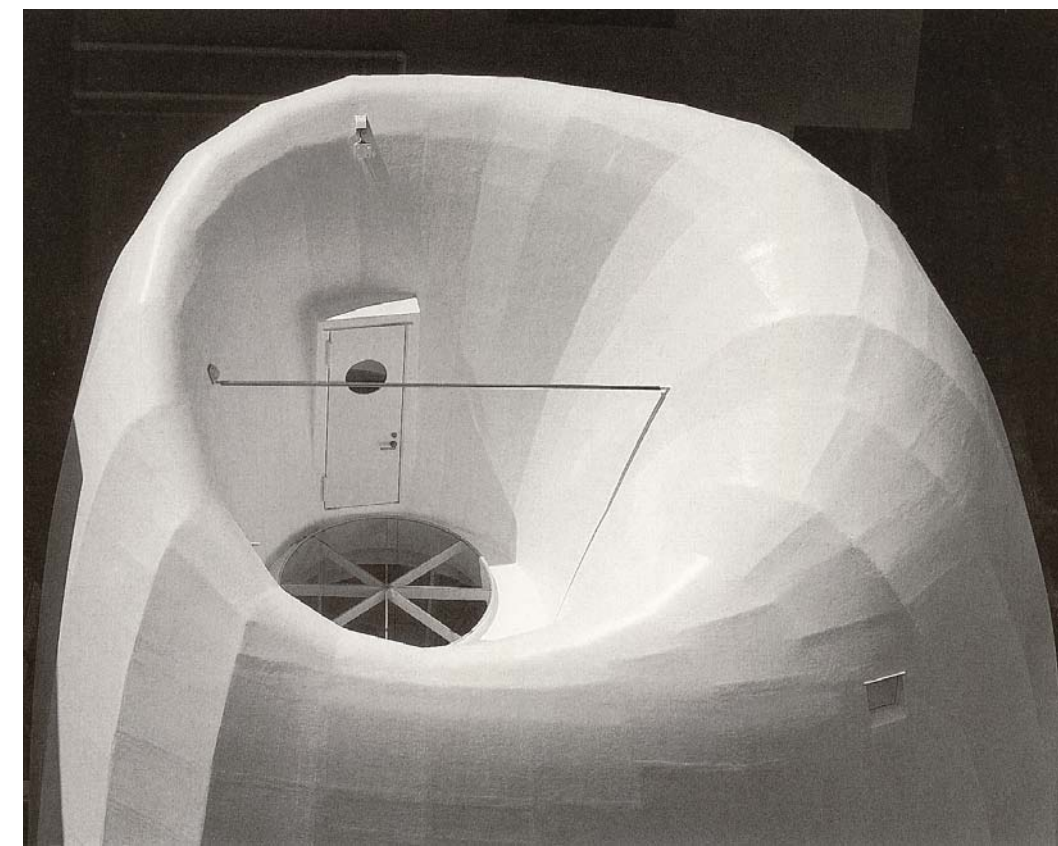
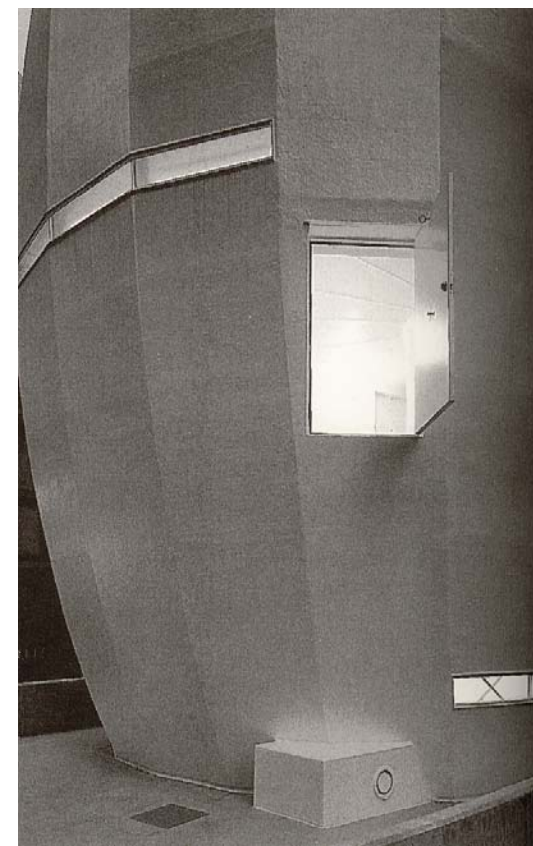


- Apartment 1
- Apartment 2
- Common Space

Accomplishing
privacy in Tokyo's busy
shopping district.

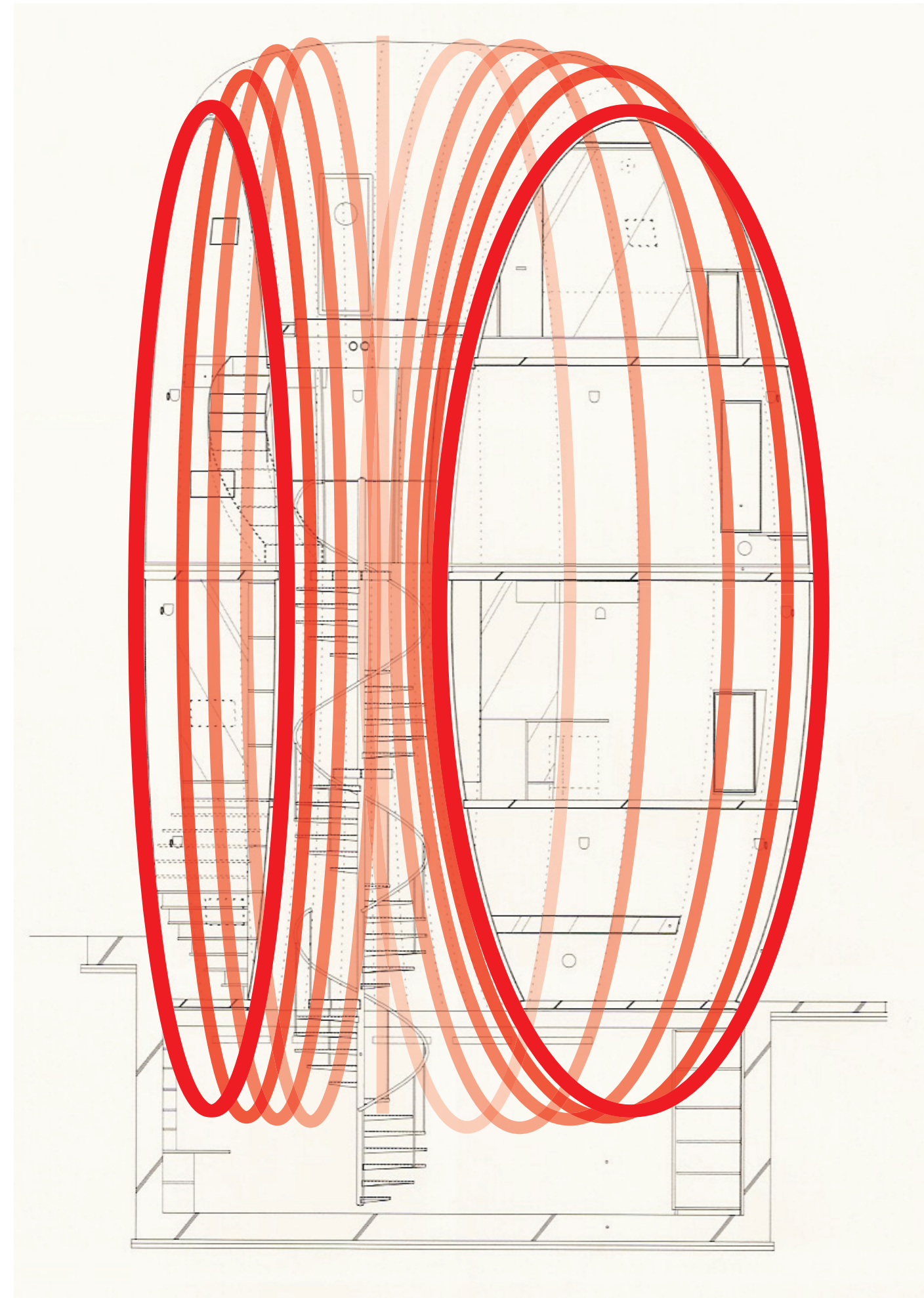


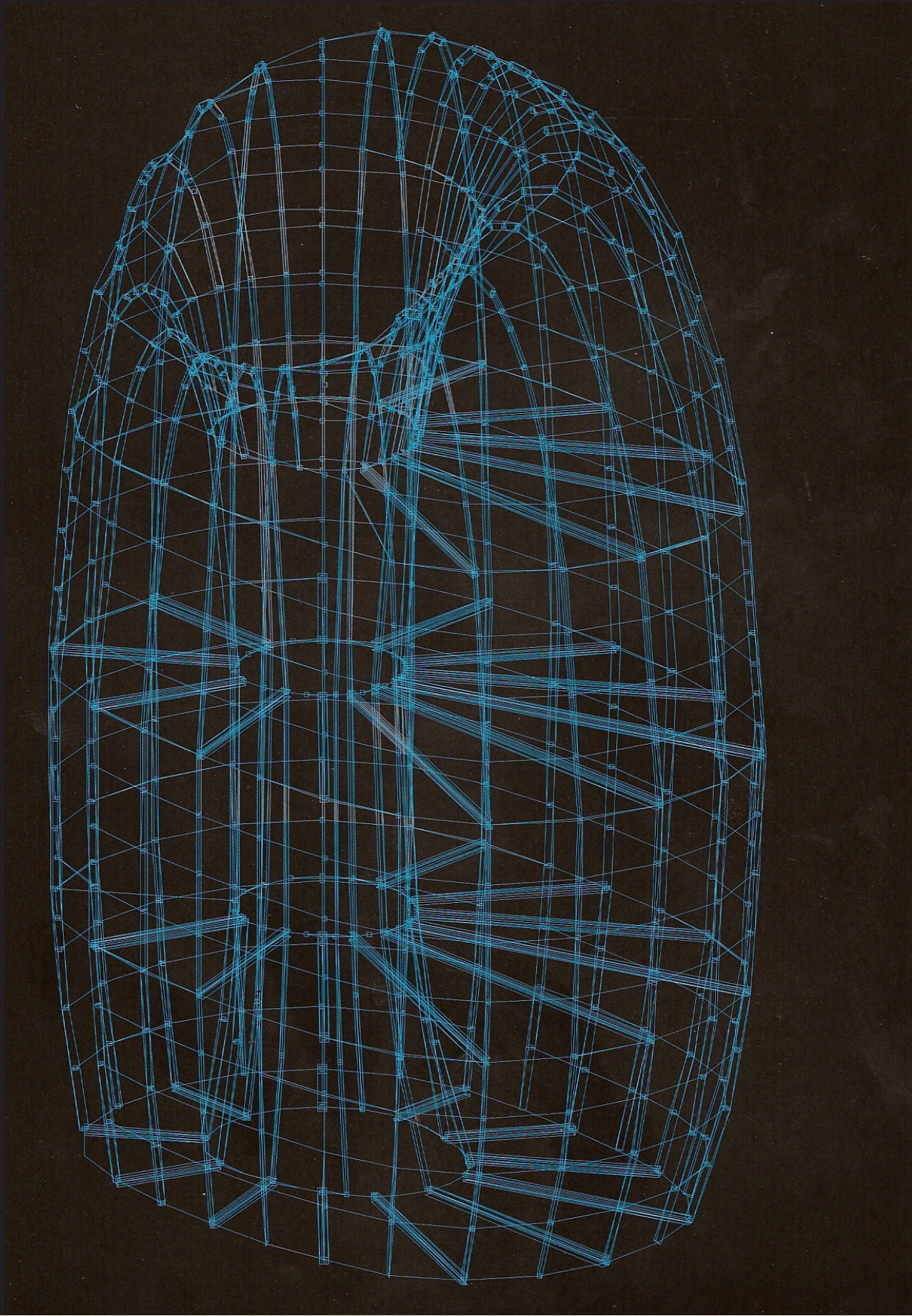
FRP- stands for Fiberglass Reinforced Polymer. It is made of polyester resin poured or applied to fiberglass. FRP offers lightweight and relatively strong. It is, however, here exclusively used as a skin, and serves little structural purpose.

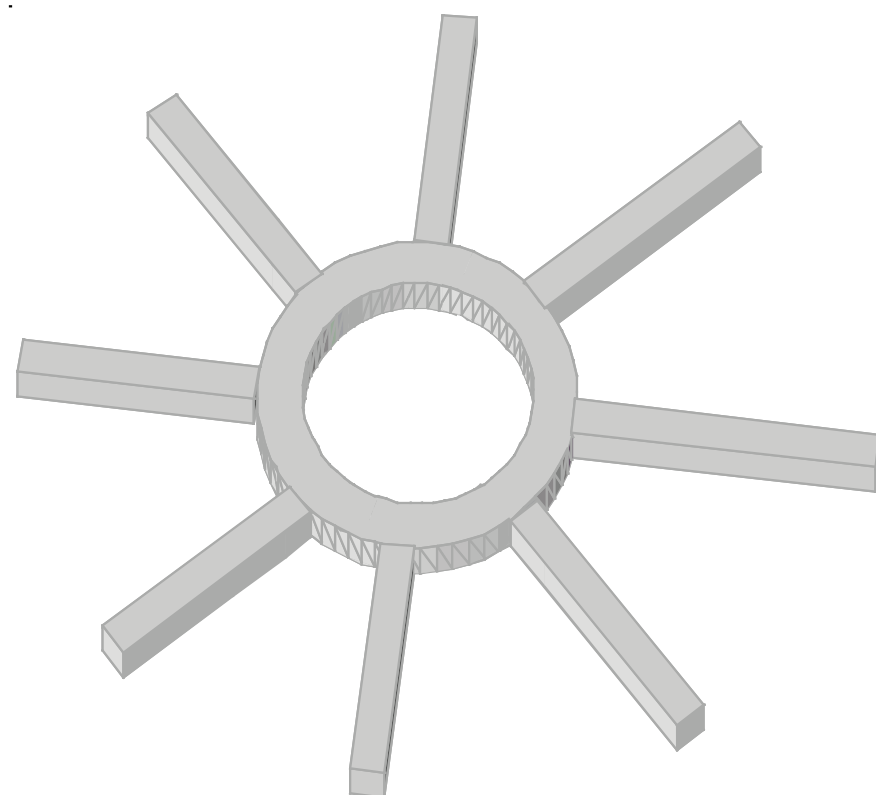


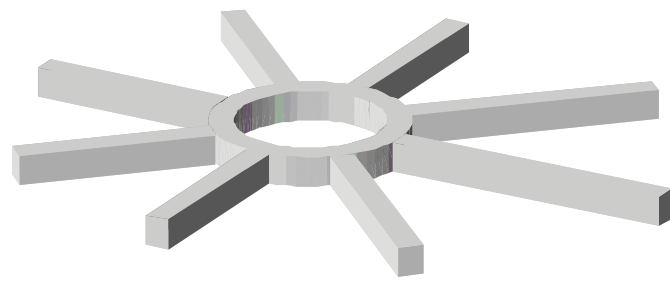
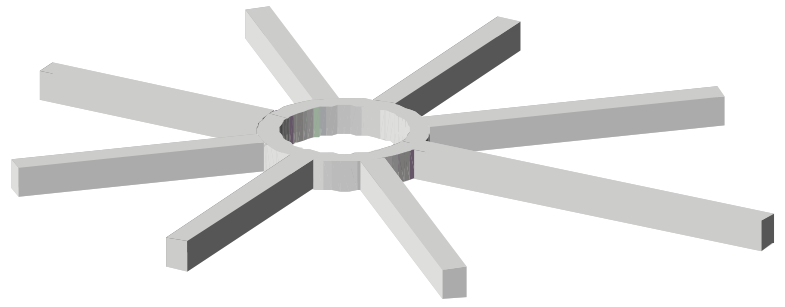
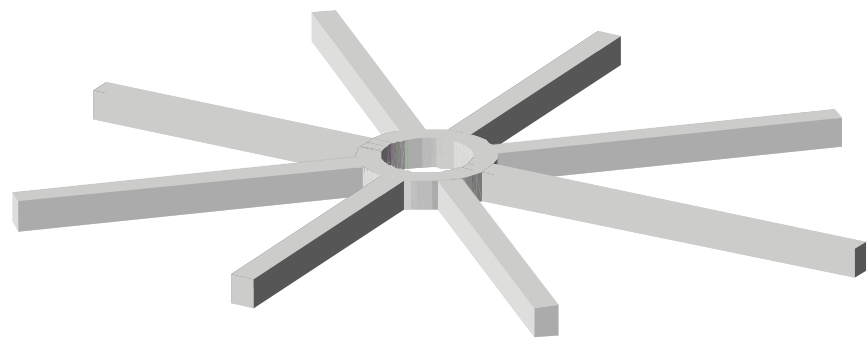
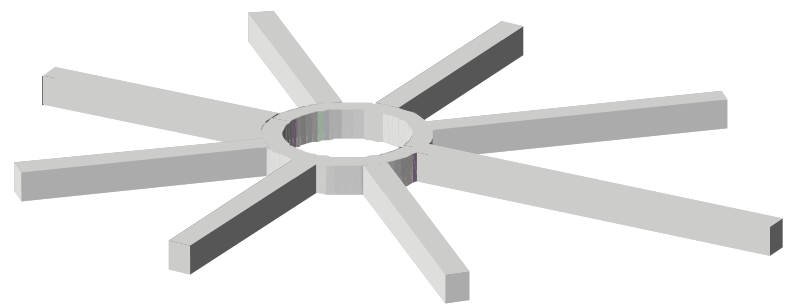
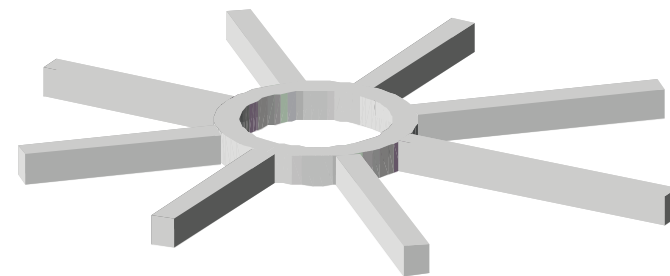
Geometry- Elliptic toroid

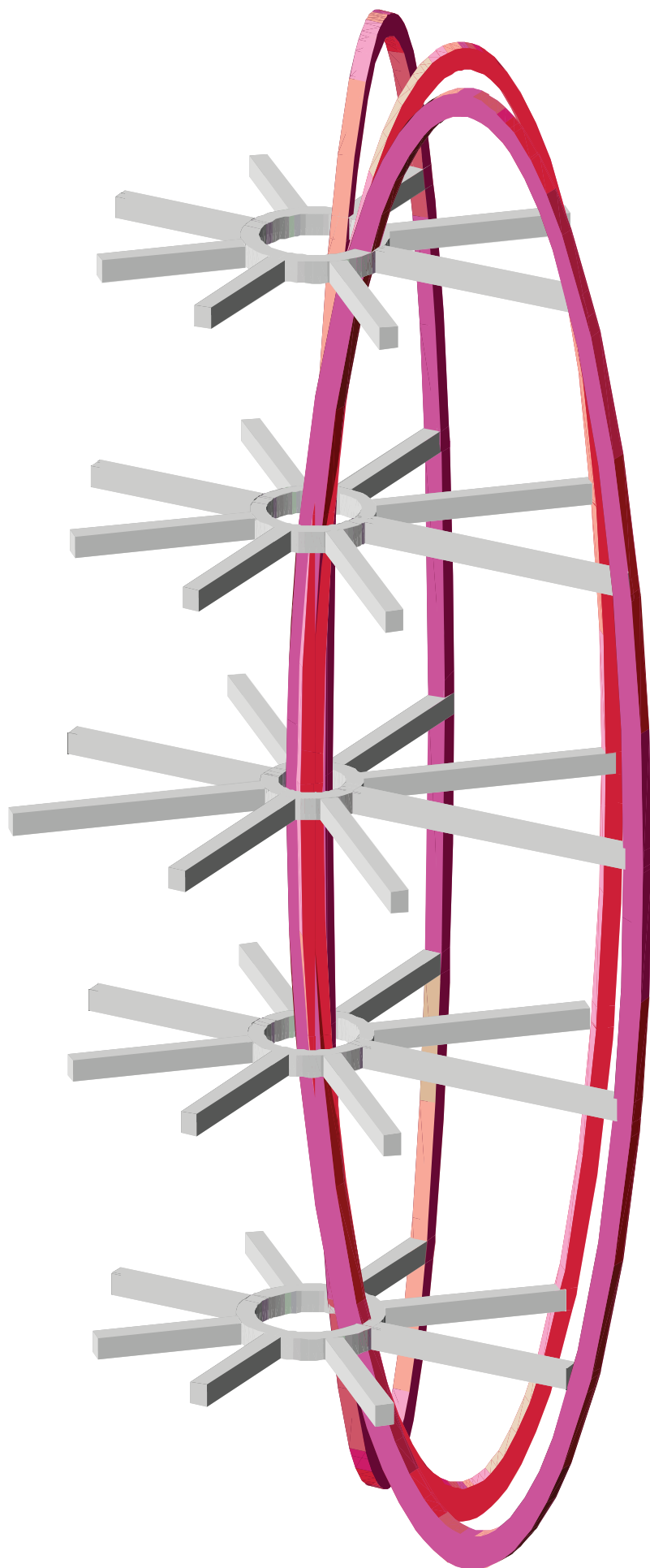
toroid- a doughnut shaped object generated by revolving a circle about an axis coplanar with the circle.













Light and structure within
the shell

